

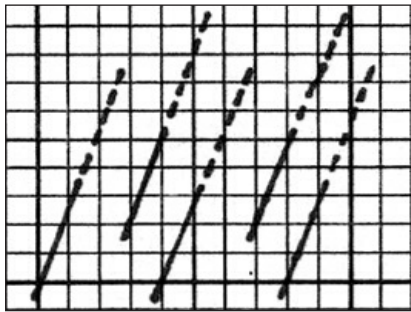
"NEEDLEPOINT LITE" STITCHES"

SPARK ORGANDY SPECIALITIES

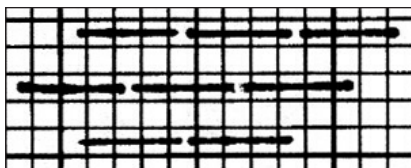
by *Designing Women*

NOTE: Basketweave, Tent Stitch or Cross Stitch work well with Spark Organdy. Color intensity & texture of stitches will change with coverage depending on the width of the Spark Organdy and the count of the canvas or fabric. See front of page for color chart.

LITE STITCHES



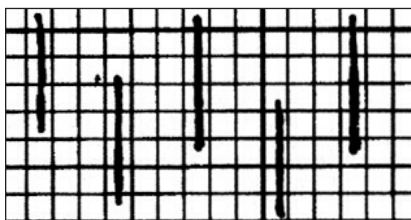
Slanted Open Gobelin



Giant Open Brick (Water or Sky)

To show painted canvas or fabric surface through stitching.

Double space between stitches for lighter coverage.



Special effects over canvas or stitched canvas. FOR EXAMPLE: Rain – spread repeat for lighter rain.

SHADING

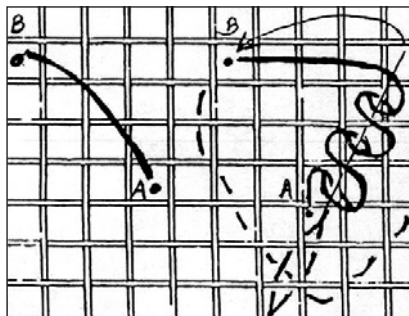


Split Stitch

Great for shading!
Translucency of thread makes the eye blend colors.

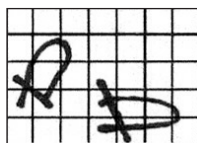
To Shade: Vary shades or colors & lengths of stitches.
May be done in any direction.

3D'LIGHTFUL



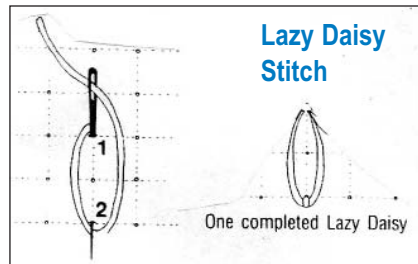
Gathered or Ruffle Stitch

Gather with a running stitch: 1. along one edge, 2. along the center, or 3. switch running stitch from side to side. Ribbon may also be gathered with contrasting thread to make flower centers & then sewn onto canvas.



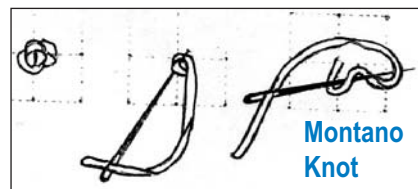
Loop Stitch

Vary size of loops. Use in rows or to fill.
Step 1 = Loop. Step 2 = Pierce & tie down.



Lazy Daisy Stitch

Loose loops - pierce ribbon when finishing each "petal." Stack loops for depth of color & added dimension.



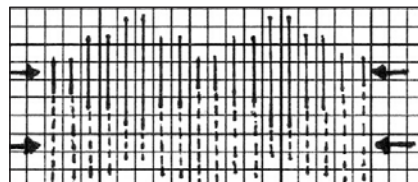
Montano Knot

A "Messy" or loose French Knot that shows off the translucent organdy.

LAYERED LITES

Any longer stitches can be puffy & their color intensified when underlaid with the same color (for dimension) or a different color (for shading or special effects). Cross or overlay colors as you stitch. Under-layers show through & colors change or intensify with stitch patterns.

Bargello Cloud Stitch



Arrows indicate where to underlay if desired.

